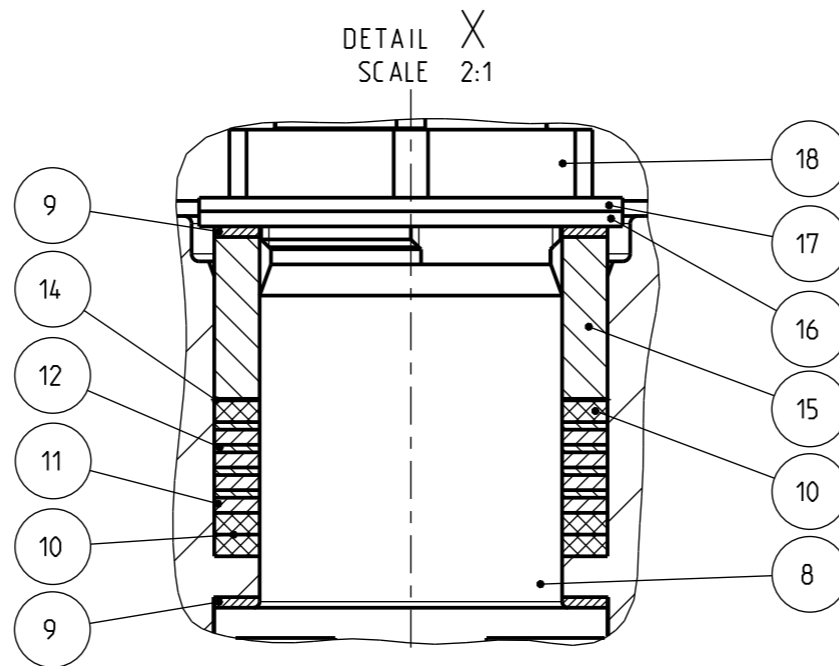
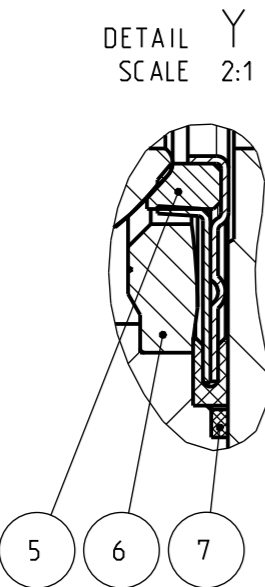
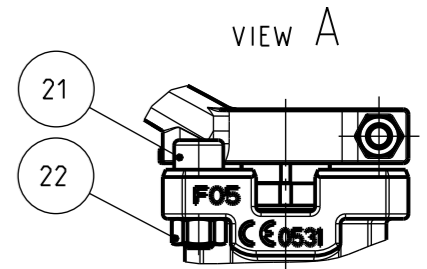
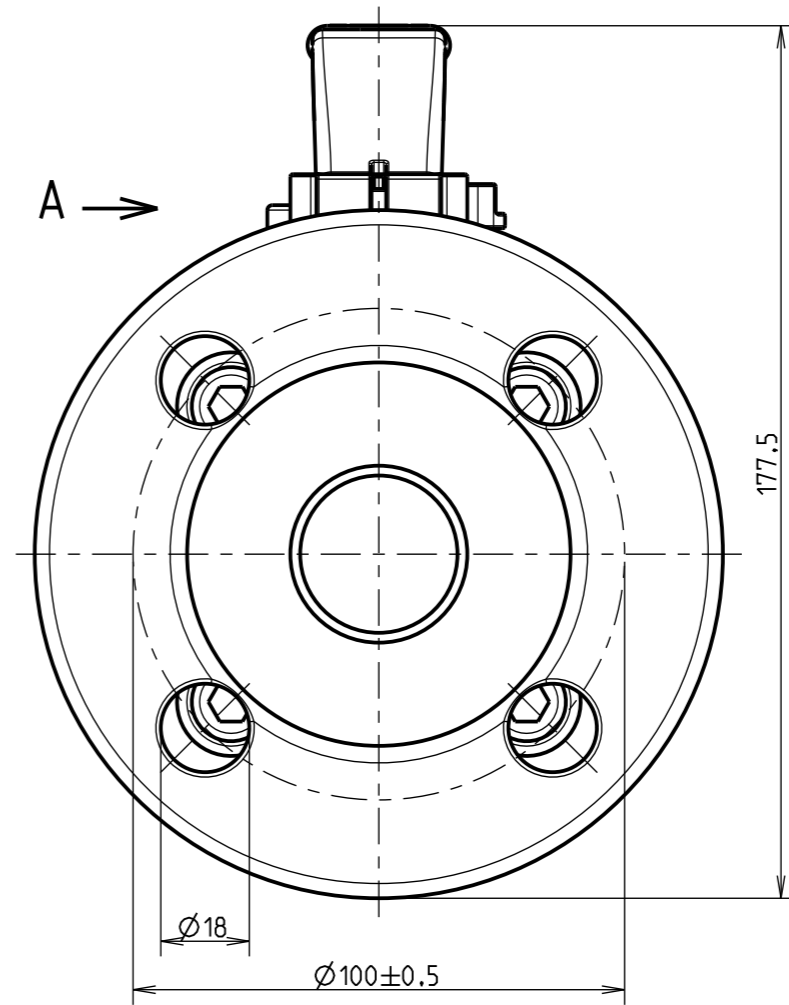
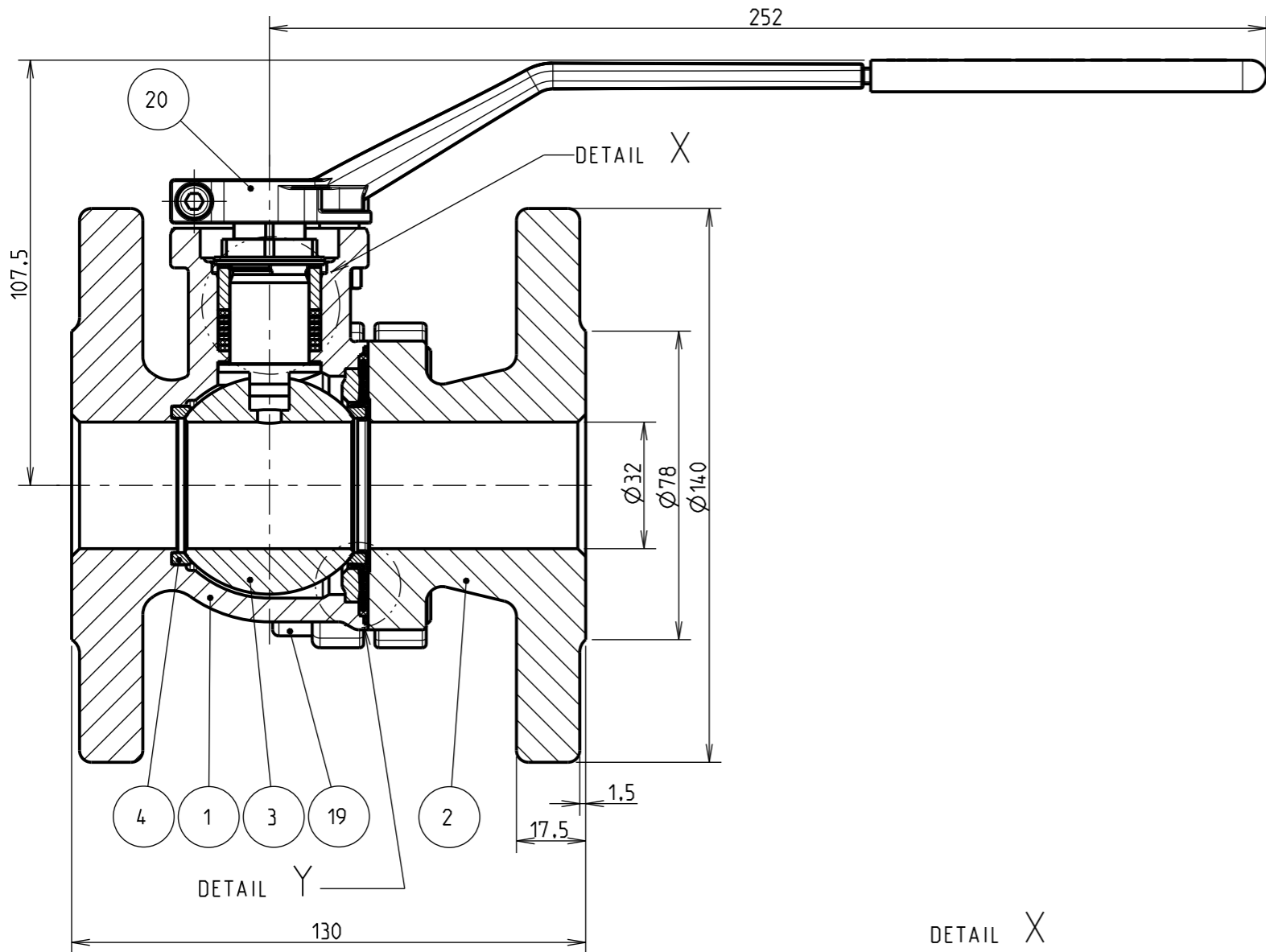


Klinger ballvalve type KHE-FK 32 PN40 VIII-KFC/FS-LABYR with lever

Gedruckt von santag am 21.08.2019

Model: WOH33672_KHEFK032_VIII_E_STL
Drawing: WOH33672_KHEFK032_VIII_E_STL

Urheberschutz nach
Copy right acc. to
Droit d'auteur selon
ISO 16016



22	1	Hexagon nut	A4 / 316 Ti
21	1	Hex. socket head cap scr.	A4-70
20	1	lever 14 KHE DN32/40	1.4057/Vinyl
19	4	Hex. socket head cap scr.	8.8-VZD
18	1	Stuffing box nut	1.4404
17	1	Belleville washer	1.4310
16	1	Disc	1.4404
15	1	Thrust ring	1.4404
14	1	Disc	1.4401
12	4	Disc	1.4401
11	4	Joint ring	K-Flon
10	3	Washer	Grafit
9	2	Washer	KFC-15
8	1	Operating stem 40	1.4104
7	1	Sealing ring	Grafit
6	1	Supporting ring	SINT C39 Spez.
5	1	Sealing element	X
4	1	Sealing ring	KFC-25
3	1	Ball KHA/KHE	1.4401
2	1	flanged end piece short 32 PN40	1.0619
1	1	body KHE-FK 32 PN40	1.0619
Pos.	Qua.	Name	Material

Certifications:
Fire Safe API 607 4th edition
EN ISO 10497

KLINGER Fluid Control GmbH, Gumpoldskirchen, Austria

Gez.: 21.08.19 Santa

WOH33672

Technische Änderungen und eventuelle Irrtümer vorbehalten
Modifications caused by technical development and any errors excepted